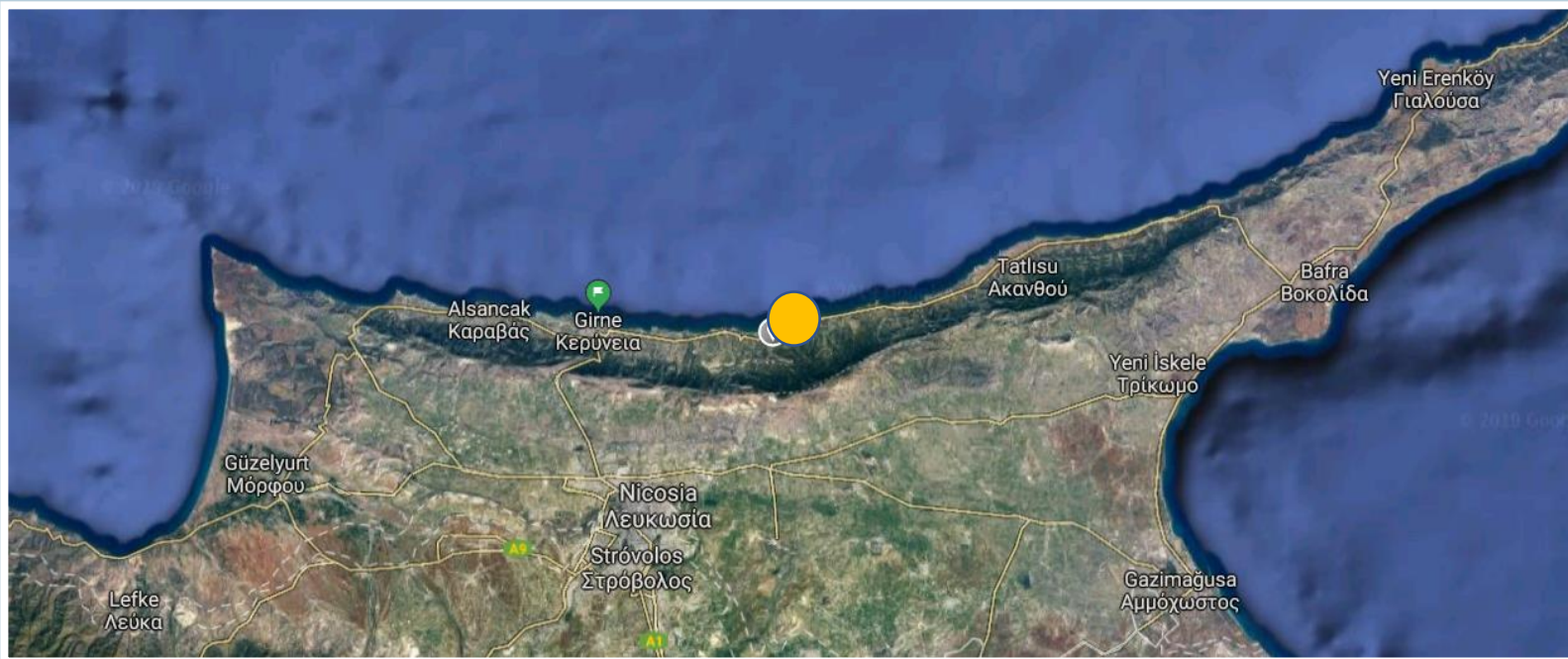




AQUAMARINE  
WEST



## In the area:

- 200 meters to natural beach
- 35 min to Kyrenia
- 5 min to supermarket
- Restaurant on site
- 20 min Golf Course
- 25 min to Elexus 5\* Hotel



An aerial photograph of a coastal development site. The site is outlined in yellow and contains several modern, multi-story buildings and a swimming pool. The site is situated on a green, grassy peninsula that meets the sea at a rocky shore. In the background, there are rolling hills and mountains under a clear blue sky. A semi-transparent grey circle in the top right corner contains the text 'SITE PLAN' in white, bold, sans-serif font.

# SITE PLAN

# BUNGALOWS





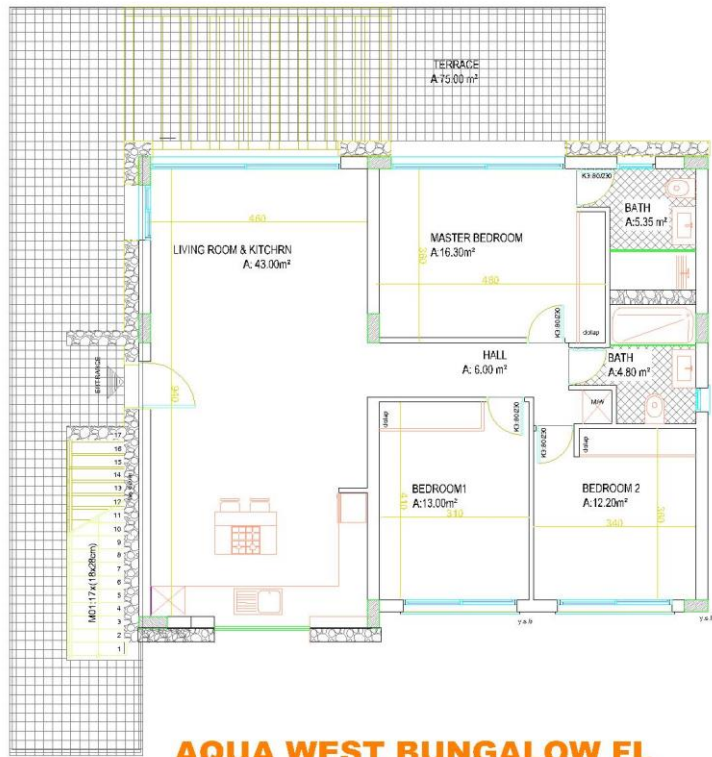
£ 195,000

## Bungalow

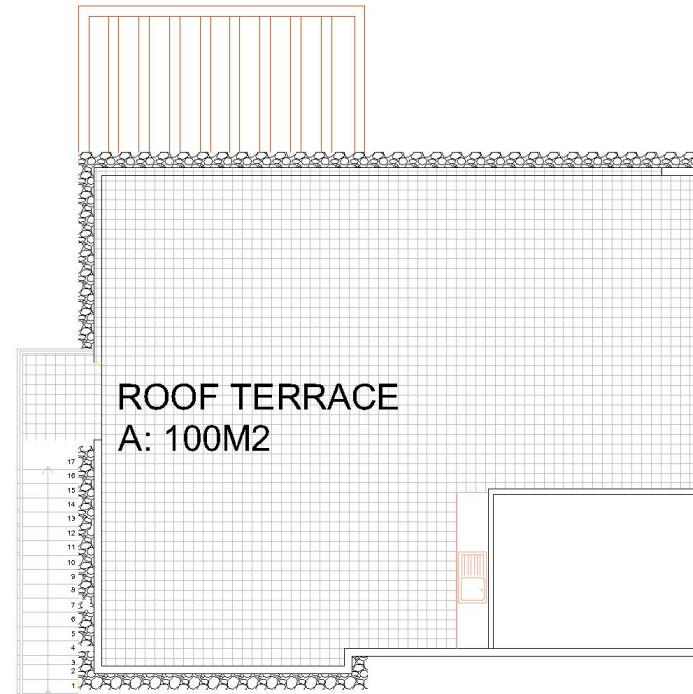
Bungalows 130m<sup>2</sup>  
3 bedrooms

Terrace: 175m<sup>2</sup>  
Total 305m<sup>2</sup>  
Including pool 10x5





**AQUA WEST BUNGALOW FL**



**ROOF PLAN**

# APARTMENT





## Apartment

From £ 95,000/125,000

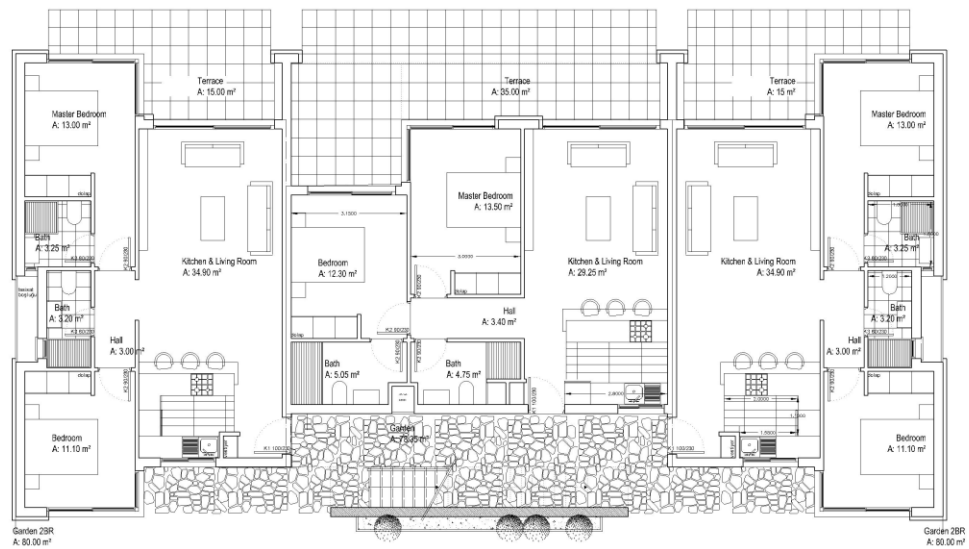
Apartment  
2 Bedroom

Garden apartment  
Total area: 95m<sup>2</sup>  
Terrace: 35m<sup>2</sup>

Penthouse  
Total area: 125m<sup>2</sup>  
Terrace: 120m<sup>2</sup>







GROUND



PENTHOUSE

# BUYING PROCESS



1. RESERVE YOUR PROPERTY £ 2000

2. SIGN POWER OF ATTORNEY WITH A LAWYER. SHARE INFORMATION ABOUT YOUR PURCHASE £ 1500

3. LAWYER PREPARES CONTRACT

4. WHEN THE CONTRACT IS READY - START THE STAGE PAYMENTS

25 % SIGNING

25 % UPON COMPLETION OF SKELETON

20 % UPON COMPLETION OF BRICK WORK. ELECTRIC. PLUMBING INFRASTRUCTURE

20 % UPON COMPLETION OF THE FLOORS AND WINDOWS

10 % UPON FULL COMPLETION OF THE APARTMENT